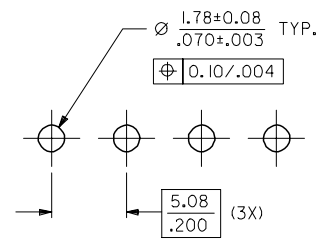
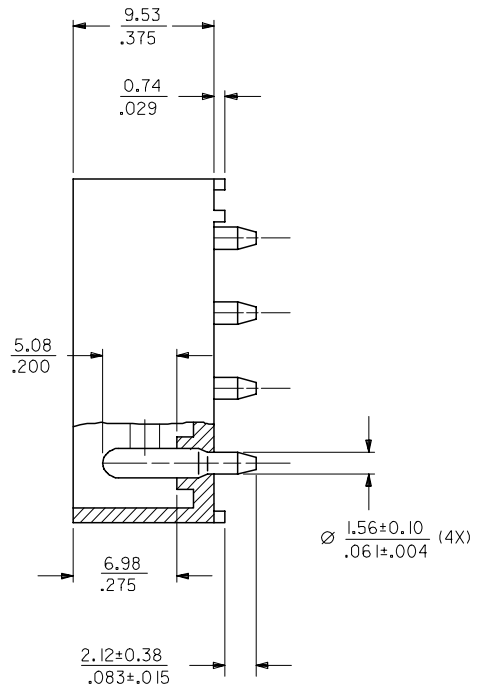
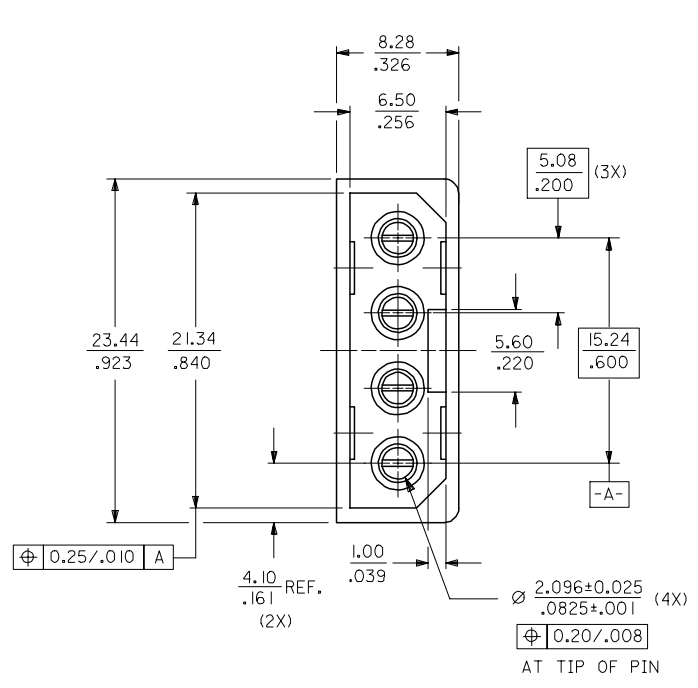


MAT'L NO.	ENG NO.	PLATING OPTION
15-24-4157	A-8981-4V4	TIN/LEAD
15-24-4557	A-8981-4V4-LF	TIN



RECOMMENDED PCB HOLE LAYOUT

NOTES :

1. PLATING  
POSTPLATE 0.0025/4.000100 MIN. TIN/LEAD OR TIN  
OVER 0.00127/.000050 MIN. NICKEL OVERALL.
2. PART TO MATE WITH 8981-4P\*.
3. PRODUCT SPEC PS-8981-4V4/4R1-P APPLIES.
4. MATERIAL:  
HOUSING - G.F. PCT UL94V-0  
COLOR BLACK  
TERMINAL - PHOS BRONZE

<b>EDIT NOTE 3</b> EC NO: S2006-0765 DRWN: LO/IAO 2006/01/26 CHKD: BOKOK 2006/01/26 APPR: PTL/IM 2006/02/06	QUALITY SYMBOLS ▽=0 ▽=0	GENERAL TOLERANCES (UNLESS SPECIFIED)		DIMENSION STYLE MM/IN		SCALE NTS	DESIGN UNITS METRIC	THIRD ANGLE PROJECTION			
		4 PLACES ± --- ± ---	3 PLACES ± --- ± .008	2 PLACES ± 0.20 ± ---	1 PLACE ± --- ± ---	ANGULAR ± 3 °	DRAWN BY SKTOH	DATE 1991/03/25	TITLE <b>POWER CONNECTOR, 4 CKTS          VERTICAL MOUNT</b>		
							CHECKED BY GWANG	DATE 1991/03/28			
							APPROVED BY RWONG	DATE 1991/03/28	MATERIAL NO. <b>MOLEX INCORPORATED</b>		
					DRAFT WHERE APPLICABLE MUST REMAIN WITHIN DIMENSIONS	SEE TABLE	DOCUMENT NO. <b>SD-8981-4V4</b>	SHEET NO. 1 OF 1			